

Working at Revecore: Insights from our Team



What does a typical workday look like?

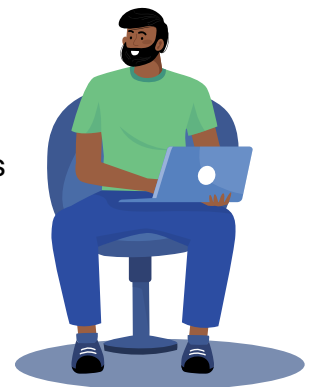
Most days are very full. The work is production-focused, and there's a steady flow of tasks, deliverables, and collaboration. You're not logging in to "see what's going on"; you're actively working throughout the day. Time tends to move fast because there's always meaningful work to be done.

How is performance measured?

Performance is measured through clear metrics, output goals, and quality standards tied directly to the work you're responsible for. These metrics are tracked closely because our work directly impacts clients and outcomes. Expectations are defined upfront, and success is based on consistently meeting those expectations and delivering high-quality results.

Are there core working hours?

Yes. While we're remote, we do have defined core hours where everyone is expected to be available, responsive, and actively working. Meetings, collaboration, and real-time problem-solving happen during this time, so being present really matters. In most cases, meetings are camera-on. This helps us stay connected as a remote team and keeps conversations productive. You don't need a perfect home office setup, but you do need to be visible, engaged, and participating.



Are there slow periods or downtime during the workday?

Not really. The work here is steady and production-driven, so most days are full, from start to finish. There isn't much idle time, and the expectation is that you're actively working and engaged during core hours. This role is best suited for someone who's looking to be fully immersed in their workday rather than fitting work around other commitments.

Who tends to thrive here?

People who do well here are self-motivated, comfortable staying busy, and energized by a fast-paced environment. If you like clear goals, measurable outcomes, and being fully immersed in your workday, you'll likely do well here!



To be the standout leader in complex revenue cycle management systems.

